

Hawaii Executive Office on Aging Systems Change Development Implementation Plan



**Hawaii Department of Health
Executive Office on Aging**

*"E Loa Ke Ola"
May Life Be Long*



HCBS Strategies Incorporated

Hawaii SCD Implementation Plan

ID	Task Name	Predecessor	Start	Finish	Resource Initials	Timeline											
						2009	2010	2011	2012	2013	2014	2015	2016	2017			
1	Project start		2/1/11	2/1/11													
2	Supplemental Scope Start		1/3/11	1/3/11													
3	HCBS Implementation Scope Start		5/16/11	5/16/11													
4	Implementation Kick-Off Conference		12/6/10	5/31/11	EOA,HCBS												
10	Finalization of 5-year plan		1/5/11	3/8/11													
16	Developing Full-Functioning ADRCs		11/15/10	9/4/15													
17	Systems Infrastructure Development for Maui Pilot		1/3/11	11/1/13													
18	Develop mechanisms to streamline referrals to the ADRC		1/3/11	12/16/11													
19	<u>Protocol for HIPAA compliance for transmitting client information</u>	<u>2</u>	<u>1/3/11</u>	<u>1/14/11</u>	<u>HCBS</u>												
20	<u>Draft protocols for web-based, phone, email, and fax referrals</u>	<u>19</u>	<u>1/17/11</u>	<u>1/28/11</u>	<u>HCBS</u>												
21	<u>Core ADRC Workgroup review of draft protocols</u>	<u>20</u>	<u>1/31/11</u>	<u>2/11/11</u>	<u>HCBS,CAW</u>												
22	Revised protocols ready for incorporation within Harmony/AGIS	21	2/14/11	2/25/11	HCBS,Hmy												
23	Establish state level MOUs for high volume referral sources to the AAA		5/16/11	8/5/11													
24	<u>EOA outreach to state level high volume agencies</u>	<u>21,3</u>	<u>5/16/11</u>	<u>6/3/11</u>	<u>EOA,Mi,HC</u>												
25	<u>Draft MOUs</u>	<u>24</u>	<u>6/6/11</u>	<u>6/17/11</u>	<u>EOA,Mi,HC</u>												
26	Agreement/Sign on MOUs with respective agencies	25	6/20/11	7/8/11	EOA,Mi												
27	Implement referral protocols	26	7/8/11	7/8/11	EOA,Mi												
28	Provide outreach and training on referring to ADRC	27	7/11/11	8/5/11	EOA,Mi												
29	Establish local level MOUs for high volume referral sources to the AAA in Maui		8/8/11	10/21/11													
30	<u>AAAs outreach to respective county agencies with high volume referrals</u>	<u>28</u>	<u>8/8/11</u>	<u>8/19/11</u>	<u>Mi,HCBS</u>												

Hawaii SCD Implementation Plan

ID	Task Name	Predecessor	Start	Finish	Resource Initials	2009	2010	2011	2012	2013	2014	2015	2016	2017
31	<u>Draft MOUs</u>	<u>30</u>	<u>8/22/11</u>	<u>9/2/11</u>	<u>Mi,HCBS</u>									
32	Agreement/Sign MOUs with respective agencies	31	9/5/11	9/23/11	Mi									
33	Implement referral protocols	32	9/26/11	10/7/11	Mi									
34	Provide outreach and training on referring to ADRC	33	10/10/11	10/21/11	Mi									
35	Integration with Low Volume Referral Sources in Maui		10/24/11	12/16/11										
36	<u>AAAs/EOA outreach to low volume referral agencies</u>	<u>34</u>	<u>10/24/11</u>	<u>11/18/11</u>	<u>Mi,HCBS</u>									
37	Provide outreach and training on referring to ADRC	36	11/21/11	12/16/11	Mi									
38	Establish MOU with Med-QUEST on referral to ADRC for all counties		5/16/11	9/2/11										
39	<u>Outreach to Med-QUEST</u>	<u>21,3</u>	<u>5/16/11</u>	<u>6/10/11</u>	<u>EOA,Mq,CA</u>									
40	<u>Draft MOU Med-QUEST</u>	<u>39</u>	<u>6/13/11</u>	<u>7/8/11</u>	<u>EOA,Mq,CA</u>									
41	Agreement/Sign MOU with Med-QUEST	40	7/11/11	8/5/11	EOA,Mq,CA									
42	Incorporate referral information with denial letters for individuals, ages 60 and older	41	8/8/11	9/2/11	EOA,Mq									
43	Develop protocol for Med-QUEST to refer applicants to respective disability supports	41	8/8/11	9/2/11	EOA,Mq									
44	Develop protocols for referrals with SHIP		5/16/11	6/24/11										
45	<u>Develop draft protocol</u>	<u>1,3</u>	<u>5/16/11</u>	<u>5/27/11</u>	<u>EOA,HCBS</u>									
46	<u>Obtain Core ADRC Workgroup Input</u>	<u>45</u>	<u>5/30/11</u>	<u>6/10/11</u>	<u>CAW,EOA,</u>									
47	<u>Revised policies incorporated into AAA policies and procedures</u>	<u>46</u>	<u>6/13/11</u>	<u>6/24/11</u>	<u>EOA,HCBS</u>									
48	Develop comprehensive set of State-specific standards for OC		5/16/11	9/23/11										
49	<u>Background research</u>	<u>1,3</u>	<u>5/16/11</u>	<u>5/27/11</u>	<u>HCBS</u>									
50	Identification of competencies		5/30/11	6/24/11	CAW,HCBS									

Hawaii SCD Implementation Plan

ID	Task Name	Predecessor	Start	Finish	Resource Initials											
						2009	2010	2011	2012	2013	2014	2015	2016	2017		
51	<u>Draft proposal</u>	<u>49</u>	<u>5/30/11</u>	<u>6/10/11</u>	<u>HCBS</u>											
52	<u>Core ADRC Workgroup review</u>	<u>51</u>	<u>6/13/11</u>	<u>6/17/11</u>	<u>CAW,HCBS</u>											
53	<u>Revised competencies</u>	<u>52</u>	<u>6/20/11</u>	<u>6/24/11</u>	<u>HCBS</u>											
54	Development of OC protocols		6/20/11	9/23/11												
55	Initial intake		6/20/11	7/29/11												
56	<u>Draft protocol</u>	<u>52</u>	<u>6/20/11</u>	<u>7/8/11</u>	<u>HCBS</u>											
57	<u>Core ADRC Workgroup review</u>	<u>56</u>	<u>7/11/11</u>	<u>7/15/11</u>	<u>CAW,HCBS</u>											
58	<u>Revised Protocol</u>	<u>57</u>	<u>7/18/11</u>	<u>7/29/11</u>	<u>HCBS</u>											
59	In-home assessment	55	8/1/11	9/9/11												
60	<u>Draft protocol</u>	<u>55</u>	<u>8/1/11</u>	<u>8/19/11</u>	<u>HCBS</u>											
61	<u>Core ADRC Workgroup review</u>	<u>60</u>	<u>8/22/11</u>	<u>8/26/11</u>	<u>CAW,HCBS</u>											
62	<u>Revised Protocol</u>	<u>61</u>	<u>8/29/11</u>	<u>9/9/11</u>	<u>HCBS</u>											
63	Support Plan		8/29/11	9/23/11												
64	<u>Draft protocol</u>	<u>61</u>	<u>8/29/11</u>	<u>9/9/11</u>	<u>HCBS</u>											
65	<u>Core ADRC Workgroup review</u>	<u>64</u>	<u>9/12/11</u>	<u>9/16/11</u>	<u>CAW,HCBS</u>											
66	<u>Revised Protocol</u>	<u>65</u>	<u>9/19/11</u>	<u>9/23/11</u>	<u>HCBS</u>											
67	Develop common initial intake protocols		1/3/11	8/31/11												
68	<u>Review of interRAI screeners and associated 2 algorithms</u>		<u>1/3/11</u>	<u>1/28/11</u>	<u>HCBS</u>											
69	Develop Intake Screens (LTC need, QExA enrolled, Likely Medicaid eligible, Need for Services, Case Complexity)		1/31/11	8/31/11												
70	<u>Draft Screens</u>	<u>68</u>	<u>1/31/11</u>	<u>2/25/11</u>	<u>HCBS</u>											
71	<u>Core ADRC Workgroup review</u>	<u>70</u>	<u>2/28/11</u>	<u>3/25/11</u>	<u>HCBS,CAW</u>											
72	<u>Incorporate protocols from LTC Options Counseling effort</u>	<u>71,55</u>	<u>8/1/11</u>	<u>8/26/11</u>	<u>HCBS</u>											
73	Revised screens ready for incorporation within Harmony	72	7/15/11	8/31/11	HCBS,Hmy											
74	Refine I&R Database and Resources		5/16/11	11/1/13												
75	Incorporate information about provider capacity		5/16/11	7/22/11												
76	<u>Identify common data elements and procedure for providers to be notified to enter data and AAA review of data</u>	<u>1,3</u>	<u>5/16/11</u>	<u>6/10/11</u>	<u>Mi,HCBS</u>											

Hawaii SCD Implementation Plan

ID	Task Name	Predecessor	Start	Finish	Resource Initials	2009	2010	2011	2012	2013	2014	2015	2016	2017
						77	<u>Core ADRC Workgroup input</u>	<u>76</u>	<u>6/13/11</u>	<u>7/1/11</u>	<u>CAW,Mi,Hu</u>			
78	Revised fields ready for incorporation with Harmony	77	7/4/11	7/22/11	Hmy,Mi									
79	<u>Revised policies incorporated into AAA policies and procedures</u>	<u>77</u>	<u>7/4/11</u>	<u>7/22/11</u>	<u>EOA,Hi,Hu</u>									
80	Establish policy to incorporate AIRS taxonomy in I&R		7/25/11	9/23/11										
81	<u>Develop draft proposal</u>	<u>78</u>	<u>7/25/11</u>	<u>8/19/11</u>	<u>Mi,HCBS</u>									
82	<u>Core ADRC Workgroup input</u>	<u>81</u>	<u>8/22/11</u>	<u>9/9/11</u>	<u>CAW,Mi,Hu</u>									
83	Revised policy ready for incorporation with Harmony	82	9/12/11	9/23/11	Hmy,Mi									
84	<u>Revised policies incorporated into AAA policies and procedures</u>	<u>82</u>	<u>9/12/11</u>	<u>9/23/11</u>	<u>EOA,Hi,Hu</u>									
85	Collect and integrate core information about programs supporting individuals with		9/26/11	2/3/12										
86	<u>Identify all relevant programs</u>	<u>83</u>	<u>9/26/11</u>	<u>10/14/11</u>	<u>Mi,HCBS</u>									
87	<u>Determine common program description data elements (e.g., eligibility criteria, point of access, etc.)</u>	<u>86</u>	<u>10/17/11</u>	<u>11/11/11</u>	<u>Mi,HCBS</u>									
88	<u>Core ADRC Workgroup review</u>	<u>87</u>	<u>11/14/11</u>	<u>12/2/11</u>	<u>CAW,Mi,Hu</u>									
89	Finalize data elements and incorporate within Harmony	88	12/5/11	12/23/11	Hmy,Mi									
90	<u>Revised policies incorporated into AAA policies and procedures</u>	<u>88</u>	<u>12/5/11</u>	<u>12/23/11</u>	<u>EOA,Hi,Hu</u>									
91	Populate database	89	12/26/11	2/3/12	EOA,Mi									
92	Identify information on provider quality to be incorporated into I&R database		2/6/12	11/1/13										
93	Mid-term enhancements		2/6/12	4/19/13										
94	Incorporate CMS/federal provider review data		2/6/12	5/25/12										
95	Identify data to be incorporated	91	2/6/12	3/2/12	Mi									
96	Determine way to upload federal review data into I & R database	95	3/5/12	3/30/12	Hmy,Mi									

Hawaii SCD Implementation Plan

ID	Task Name	Predecessor	Start	Finish	Resource Initials	2009	2010	2011	2012	2013	2014	2015	2016	2017
97	Core ADRC Workgroup input and decision to proceed	96	4/2/12	4/27/12	CAW,Mi									
98	Establish uploading procedure	97	4/30/12	5/25/12	Hmy									
99	Incorporate residential care and nursing home information	94	5/28/12	11/2/12										
100	Identify data to be incorporated	98	5/28/12	6/15/12	Mi									
101	Obtain approval to access and publish data	100	6/18/12	8/10/12	EOA,Mi									
102	Determine way to upload data into I & R database	101	8/13/12	9/7/12	Hmy,Mi									
103	Core ADRC Workgroup input and decision to proceed	102	9/10/12	10/5/12	CAW,Mi									
104	Establish uploading procedure	103	10/8/12	11/2/12	Hmy									
105	Incorporate Community Care Family Foster Homes	99	11/5/12	4/19/13										
106	Identify data to be incorporated	104	11/5/12	11/30/12	Mi									
107	Obtain approval to access and publish data	106	12/3/12	1/25/13	EOA,Mi									
108	Determine way to upload data into I & R database	107	1/28/13	2/22/13	Hmy,Mi									
109	Core ADRC Workgroup input and decision to proceed	108	2/25/13	3/22/13	CAW,Mi									
110	Establish uploading procedure	109	3/25/13	4/19/13	Hmy									
111	Longer-term enhancements		4/22/13	11/1/13										
112	Incorporate AAA provider reviews	105	4/22/13	9/6/13										
113	<u><i>Develop draft common provider review tool and timeframes for conducting reviews</i></u>	<u><i>110</i></u>	<u><i>4/22/13</i></u>	<u><i>6/14/13</i></u>	<u><i>HCBS</i></u>									
114	<u><i>Core ADRC Workgroup input</i></u>	<u><i>113</i></u>	<u><i>6/17/13</i></u>	<u><i>7/12/13</i></u>	<u><i>HCBS,CAW</i></u>									
115	<u><i>Revise tool and obtain provider input</i></u>	<u><i>114</i></u>	<u><i>7/15/13</i></u>	<u><i>8/9/13</i></u>	<u><i>HCBS,CAW</i></u>									
116	Revised tool ready for incorporation within Harmony	115	8/12/13	9/6/13	Hmy,HCBS									

Hawaii SCD Implementation Plan

ID	Task Name	Predecessor	Start	Finish	Resource Initials	2009	2010	2011	2012	2013	2014	2015	2016	2017
117	Explore consumer reviews	116	9/9/13	11/1/13										
118	Develop protocol for assisting with Medicaid application		5/16/11	10/14/11										
119	<u>Discussion with Med-QUEST regarding requirements for a complete application</u>	<u>2,3</u>	<u>5/16/11</u>	<u>7/8/11</u>	<u>HCBS,EOA,</u>									
120	<u>Draft protocol for completing package and tracking application status</u>	<u>119</u>	<u>7/11/11</u>	<u>8/19/11</u>	<u>HCBS</u>									
121	<u>Core ADRC Workgroup and Med-QUEST review</u>	<u>120</u>	<u>8/22/11</u>	<u>9/16/11</u>	<u>HCBS,CAW</u>									
122	Revised protocol ready for incorporation within Harmony	121	9/19/11	10/14/11	HCBS,Hmy									
123	Develop protocols for linkages for other disability populations		5/16/11	11/25/11										
124	Develop protocols for handoff for adults with physical disabilities		5/16/11	11/25/11										
125	<u>Identify organization that will receive referrals</u>	<u>1,3</u>	<u>5/16/11</u>	<u>8/5/11</u>	<u>EOA,Mi,HC</u>									
126	<u>Develop draft protocol for handoff</u>	<u>125</u>	<u>8/8/11</u>	<u>9/30/11</u>	<u>EOA,Mi,HC</u>									
127	<u>Core ADRC Workgroup and disability entity review</u>	<u>126</u>	<u>10/3/11</u>	<u>10/28/11</u>	<u>CAW,EOA,</u>									
128	<u>Revised policies incorporated into AAA policies and procedures</u>	<u>127</u>	<u>10/31/11</u>	<u>11/25/11</u>	<u>HCBS,CAW</u>									
129	Revised protocol ready for incorporation within Harmony	127	10/31/11	11/25/11	Hmy,Mi									
130	Develop protocols for handoff to DDD		5/16/11	9/2/11										
131	<u>Develop draft protocol for handoff</u>	<u>1,3</u>	<u>5/16/11</u>	<u>6/10/11</u>	<u>Mi,DDD,EC</u>									
132	<u>Core ADRC Workgroup and DDD review</u>	<u>131</u>	<u>6/13/11</u>	<u>7/8/11</u>	<u>CAW,Mi,DI</u>									
133	<u>Revised policies incorporated into AAA policies and procedures</u>	<u>132</u>	<u>7/11/11</u>	<u>9/2/11</u>	<u>HCBS,CAW</u>									
134	Revised protocol ready for incorporation within Harmony	132	7/11/11	9/2/11	Hmy,Mi									
135	Develop protocols for handoff to Mental Health		7/11/11	9/16/11										
136	<u>Develop draft protocol for handoff</u>	<u>132</u>	<u>7/11/11</u>	<u>8/5/11</u>	<u>Mi,MH,EO,</u>									

Hawaii SCD Implementation Plan

ID	Task Name	Predecessor	Start	Finish	Resource Initials	2009	2010	2011	2012	2013	2014	2015	2016	2017
						137	<u>Core ADRC Workgroup and Mental Health review</u>	<u>136</u>	<u>8/8/11</u>	<u>9/2/11</u>	<u>CAW,Mi,M</u>			
138	<u>Revised policies incorporated into AAA policies and procedures</u>	<u>137</u>	<u>9/5/11</u>	<u>9/16/11</u>	<u>HCBS,CAW</u>									
139	Revised protocol ready for incorporation within Harmony	137	9/5/11	9/16/11	Hmy,Mi									
140	Develop protocols for handoff for children and youth		7/11/11	9/16/11										
141	<u>Develop draft protocol for handoff</u>	<u>132</u>	<u>7/11/11</u>	<u>8/5/11</u>	<u>EOA,Mi,HC</u>									
142	<u>Core ADRC Workgroup and agencies representing children and youth</u>	<u>141</u>	<u>8/8/11</u>	<u>9/2/11</u>	<u>Mi,HCBS</u>									
143	<u>Revised policies incorporated into AAA policies and procedures</u>	<u>142</u>	<u>9/5/11</u>	<u>9/16/11</u>	<u>HCBS,CAW</u>									
144	Revised protocol ready for incorporation within Harmony	142	9/5/11	9/16/11	Hmy,Mi									
145	Develop common in-home assessment protocol		1/31/11	11/11/11										
146	Review and adapt interRAI-HC for Hawaii		1/31/11	3/11/11										
147	<u>Identify necessary changes to items (e.g., descriptions of residential options, ethnicity categories, etc.)</u>	<u>68</u>	<u>1/31/11</u>	<u>2/25/11</u>	<u>HCBS</u>									
148	<u>Identify algorithms that can be used for risk status & assignment to case</u>	<u>147</u>	<u>2/28/11</u>	<u>3/11/11</u>	<u>HCBS</u>									
149	<u>Review proposed changes with Core ADRC Workgroup and interRAI</u>	<u>148</u>	<u>3/14/11</u>	<u>4/1/11</u>	<u>HCBS,CAW</u>									
150	Develop assessment protocol		5/16/11	11/11/11										
151	Develop criteria to receive case management and assign to high risk		5/16/11	7/1/11										
152	<u>Develop draft criteria</u>	<u>148,3</u>	<u>5/16/11</u>	<u>6/3/11</u>	<u>HCBS</u>									
153	<u>Obtain Core ADRC Workgroup input</u>	<u>152</u>	<u>6/6/11</u>	<u>6/17/11</u>	<u>HCBS,CAW</u>									
154	<u>Revised policies incorporated into AAA policies and procedures</u>	<u>153</u>	<u>6/20/11</u>	<u>7/1/11</u>	<u>EOA,Hi,Hu,</u>									

Hawaii SCD Implementation Plan

ID	Task Name	Predecessor	Start	Finish	Resource Initials	2009	2010	2011	2012	2013	2014	2015	2016	2017
						155	Revised criteria ready for incorporation within Harmony	153	6/20/11	7/1/11	HCBS			
156	Develop protocol for determining Medicaid spend down risk		7/11/11	9/2/11										
157	<i>Develop protocol criteria</i>	<i>148,3,11</i>	<i>7/11/11</i>	<i>8/5/11</i>	<i>HCBS</i>									
158	<i>Obtain Core ADRC Workgroup input</i>	<i>157</i>	<i>8/8/11</i>	<i>8/19/11</i>	<i>HCBS,CAW</i>									
159	Revised protocol ready for incorporation within Harmony	158	8/22/11	9/2/11	HCBS,Hmy									
160	<i>Revised policies incorporated into AAA policies and procedures</i>	<i>158</i>	<i>8/22/11</i>	<i>9/2/11</i>	<i>EOA,Hi,Hu,</i>									
161	Incorporate person-centered planning		5/16/11	8/5/11										
162	<i>Develop draft modifications</i>	<i>148,3</i>	<i>5/16/11</i>	<i>7/8/11</i>	<i>HCBS</i>									
163	<i>Obtain Core ADRC Workgroup input</i>	<i>162</i>	<i>7/11/11</i>	<i>7/22/11</i>	<i>HCBS,CAW</i>									
164	<i>Revised policies incorporated into AAA policies and procedures</i>	<i>163</i>	<i>7/25/11</i>	<i>8/5/11</i>	<i>EOA,Hi,Hu,</i>									
165	Revised protocols ready for incorporation within Harmony	163	7/25/11	8/5/11	HCBS,Hmy									
166	<i>Integrate revised interRAI-HC with other protocols and incorporate protocols developed as part of the Options Counseling Effort</i>	<i>149,155,</i>	<i>9/12/11</i>	<i>9/30/11</i>	<i>HCBS</i>									
167	<i>Review final assessment protocol with Core ADRC Workgroup</i>	<i>166</i>	<i>10/3/11</i>	<i>10/21/11</i>	<i>HCBS,CAW</i>									
168	Revised protocol ready for incorporation within Harmony	167	10/24/11	11/11/11	HCBS,Hmy									
169	Develop waitlist policy		6/20/11	8/12/11										

Hawaii SCD Implementation Plan

ID	Task Name	Predecessor	Start	Finish	Resource Initials	2009	2010	2011	2012	2013	2014	2015	2016	2017
170	<u><i>Draft policy and protocol that identifies who goes on waitlist and procedure for handling wait list</i></u>	<u>153</u>	<u>6/20/11</u>	<u>7/15/11</u>	<u>HCBS</u>									
171	<u><i>Obtain Core ADRC Workgroup input</i></u>	<u>170</u>	<u>7/18/11</u>	<u>7/29/11</u>	<u>CAW,HCBS</u>									
172	<u><i>Revised policies incorporated into AAA policies and procedures</i></u>	<u>170</u>	<u>7/18/11</u>	<u>7/29/11</u>	<u>EOA,Hi,Hu,</u>									
173	Revised protocols ready for incorporation within Harmony	171	8/1/11	8/12/11	HCBS,Hmy									
174	Develop Support Plan		1/31/11	11/18/11										
175	<u><i>Review interRAI capabilities, such as Clinical Action Plans (CAPS)</i></u>	<u>68</u>	<u>1/31/11</u>	<u>2/7/11</u>	<u>HCBS</u>									
176	<u><i>Develop draft Support Plan that includes goals and outcomes and CAPS</i></u>	<u>175,3</u>	<u>5/16/11</u>	<u>7/8/11</u>	<u>HCBS</u>									
177	<u><i>Incorporate protocols from Options Counseling Effort</i></u>	<u>176,63</u>	<u>9/26/11</u>	<u>10/21/11</u>	<u>HCBS</u>									
178	<u><i>Obtain Core ADRC Workgroup Input</i></u>	<u>177</u>	<u>10/24/11</u>	<u>11/4/11</u>	<u>CAW,HCBS</u>									
179	<u><i>Revised policies incorporated into AAA policies and procedures</i></u>	<u>178</u>	<u>11/7/11</u>	<u>11/18/11</u>	<u>EOA,Hi,Hu,</u>									
180	Revise Support Plan and Prepare for Incorporation within Harmony	178	11/7/11	11/11/11	HCBS,Hmy									
181	Develop Continuous Quality Improvement Infrastructure for ADRC Activities		3/31/11	4/13/12										
182	Finalize Performance Indicators		5/16/11	8/5/11										
183	<u><i>Core ADRC Workgroup review of draft indicators</i></u>	<u>1,3</u>	<u>5/16/11</u>	<u>6/10/11</u>	<u>CAW,HCBS</u>									
184	<u><i>Core ADRC decision regarding threshold for when corrective action should occur</i></u>	<u>183</u>	<u>6/13/11</u>	<u>7/8/11</u>	<u>HCBS,CAW</u>									
185	<u><i>Finalization of performance indicators</i></u>	<u>184</u>	<u>7/11/11</u>	<u>8/5/11</u>	<u>HCBS</u>									
186	Develop data collection methods		3/31/11	12/23/11										
187	Timeliness of assessment		8/8/11	9/30/11										

Hawaii SCD Implementation Plan

ID	Task Name	Predecessor	Start	Finish	Resource Initials	2009	2010	2011	2012	2013	2014	2015	2016	2017
188	<u><i>Ensure staff are documenting initial intake and assessments within Harmony</i></u>	<u>185</u>	<u>8/8/11</u>	<u>9/2/11</u>	<u>EOA,Hmy,I</u>									
189	Build query that tracks timeliness within Harmony	188	9/5/11	9/30/11	Hmy									
190	Timeliness of service delivery		3/31/11	9/30/11										
191	Enroll all service providers in Provider Direct	185	3/31/11	9/2/11	EOA,Hmy,M									
192	<u><i>Ensure that providers are documenting service delivery within Provider Direct</i></u>	<u>185</u>	<u>8/8/11</u>	<u>9/2/11</u>	<u>EOA,Hmy,I</u>									
193	Build query that tracks timeliness within Harmony	192	9/5/11	9/30/11	Hmy									
194	Timeliness of QExA Approval		5/16/11	11/25/11										
195	<u><i>Meet with Med-QUEST and obtain buy-in on indicator</i></u>	<u>1,3</u>	<u>5/16/11</u>	<u>8/5/11</u>	<u>Mi,EOA,HC</u>									
196	<u><i>Draft protocol for checking DMO for application status</i></u>	<u>195</u>	<u>8/8/11</u>	<u>9/2/11</u>	<u>HCBS</u>									
197	<u><i>Core ADRC Workgroup review</i></u>	<u>196</u>	<u>9/5/11</u>	<u>9/30/11</u>	<u>CAW,HCBS</u>									
198	<u><i>Revised policies incorporated into AAA policies and procedures</i></u>	<u>197</u>	<u>10/3/11</u>	<u>10/28/11</u>	<u>EOA,Hi,Hu,</u>									
199	Revised protocol ready for incorporation within Harmony	197	10/3/11	10/28/11	HCBS,Hmy									
200	Build query that tracks timeliness within Harmony	199	10/31/11	11/25/11	Hmy									
201	Participant Experience		8/8/11	12/23/11										
202	<u><i>Core ADRC Workgroup selects tool</i></u>	<u>185</u>	<u>8/8/11</u>	<u>9/2/11</u>	<u>CAW,HCBS</u>									
203	<u><i>Draft protocol for use of tool (e.g., when it will be used and how)</i></u>	<u>202</u>	<u>9/5/11</u>	<u>9/30/11</u>	<u>HCBS</u>									
204	<u><i>Core ADRC Workgroup review</i></u>	<u>203</u>	<u>10/3/11</u>	<u>10/28/11</u>	<u>CAW,HCBS</u>									
205	<u><i>Revised policies incorporated into AAA policies and procedures</i></u>	<u>204</u>	<u>10/31/11</u>	<u>11/25/11</u>	<u>EOA,Hi,Hu,</u>									

Hawaii SCD Implementation Plan

ID	Task Name	Predecessor	Start	Finish	Resource Initials	2009	2010	2011	2012	2013	2014	2015	2016	2017
						206	Revised protocol ready for incorporation within Harmony	204	10/31/11	11/25/11	HCBS,Hmy			
207	Build query that reports performance within Harmony	206	11/28/11	12/23/11	Hmy									
208	Management Reports		12/26/11	4/6/12										
209	<u>Incorporated queries into draft management reports targeting the following users: EOA, AAA management, AAA supervisors, AAA frontline staff</u>	187,190,	12/26/11	2/17/12	CAW,HCBS									
210	<u>Core ADRC Workgroup review</u>	209	2/20/12	3/9/12	CAW,HCBS									
211	<u>Revise templates</u>	210	3/12/12	4/6/12	HCBS									
212	Finalize management reports and prepare for incorporation within Harmony	210	3/12/12	4/6/12	HCBS,Hmy									
213	Establish review and remediation processes		10/3/11	4/13/12										
214	Develop internal AAA review process		10/3/11	11/18/11										
215	<u>Develop draft process</u>	193	10/3/11	10/21/11	HCBS									
216	<u>Core ADRC Workgroup review</u>	215	10/24/11	11/4/11	CAW,HCBS									
217	<u>Revise process and incorporate into AAA policies and procedures</u>	216	11/7/11	11/18/11	EOA,Mi,HC									
218	Develop EOA-AAA review process	214	11/21/11	12/30/11										
219	<u>Develop draft process</u>	216	11/21/11	12/2/11	HCBS									
220	<u>Core ADRC Workgroup review</u>	219	12/5/11	12/16/11	CAW,HCBS									
221	<u>Revise process and incorporate into AAA policies and procedures</u>	220	12/19/11	12/30/11	HCBS,EOA,									
222	Develop review process for external stakeholders	218	1/2/12	2/10/12										
223	<u>Develop draft process</u>	220	1/2/12	1/13/12	HCBS									

Hawaii SCD Implementation Plan

ID	Task Name	Predecessor	Start	Finish	Resource Initials	2009	2010	2011	2012	2013	2014	2015	2016	2017
224	<u>Core ADRC Workgroup review</u>	<u>223</u>	<u>1/16/12</u>	<u>1/27/12</u>	<u>CAW,HCBS</u>									
225	<u>Revise process and incorporate into AAA policies and procedures</u>	<u>224</u>	<u>1/30/12</u>	<u>2/10/12</u>	<u>HCBS,EOA,</u>									
226	Develop interagency review process	222	2/13/12	4/13/12										
227	<u>Develop draft process</u>	<u>197</u>	<u>2/13/12</u>	<u>3/2/12</u>	<u>HCBS,EOA,</u>									
228	<u>Core ADRC Workgroup and Med-QUEST review</u>	<u>227</u>	<u>3/5/12</u>	<u>3/23/12</u>	<u>CAW,EOA,</u>									
229	<u>Revise process and incorporate into AAA policies and procedures</u>	<u>228</u>	<u>3/26/12</u>	<u>4/13/12</u>	<u>HCBS,EOA,</u>									
230	Adapt Harmony for Maui Pilot		10/10/11	1/20/12										
231	Incorporate referral protocols	27,33,22	10/10/11	10/21/11	Hmy									
232	Incorporate initial intake protocols and algorithm	73,122,1	11/28/11	12/23/11	Hmy									
233	Incorporate changes to I & R database		12/26/11	1/20/12	Hmy									
234	Initial enhancement for Maui pilot	78,83,89	12/26/11	1/20/12	Hmy									
235	Incorporate assessment protocols and algorithm	122,155,	11/14/11	12/9/11	Hmy									
236	Incorporate support plan and targeting protocols and algorithms	171,180	11/14/11	12/9/11	Hmy									
237	Longer term Harmony adaptations		4/9/12	10/4/13										
238	Incorporate changes to I & R database		4/22/13	10/4/13	Hmy									
239	Mid-term enhancements	98,104,1	4/22/13	5/17/13	Hmy									
240	Longer term enhancements	116	9/9/13	10/4/13	Hmy									
241	Longer term CQI enhancements	200,206,	4/9/12	5/4/12	Hmy									
242	Develop training infrastructure		12/5/11	7/27/12										
243	Training specific to new ADRC operations		12/5/11	6/29/12										
244	Intake staff		12/5/11	1/27/12										
245	<u>Develop training curricula and training approach</u>	<u>69,80,88</u>	<u>12/5/11</u>	<u>12/30/11</u>	<u>HCBS,Mi</u>									
246	<u>Core ADRC Workgroup input</u>	<u>245</u>	<u>1/2/12</u>	<u>1/13/12</u>	<u>HCBS,Mi,C</u>									
247	<u>Revise training curricula and training approach</u>	<u>246</u>	<u>1/16/12</u>	<u>1/27/12</u>	<u>HCBS,Mi</u>									

Hawaii SCD Implementation Plan

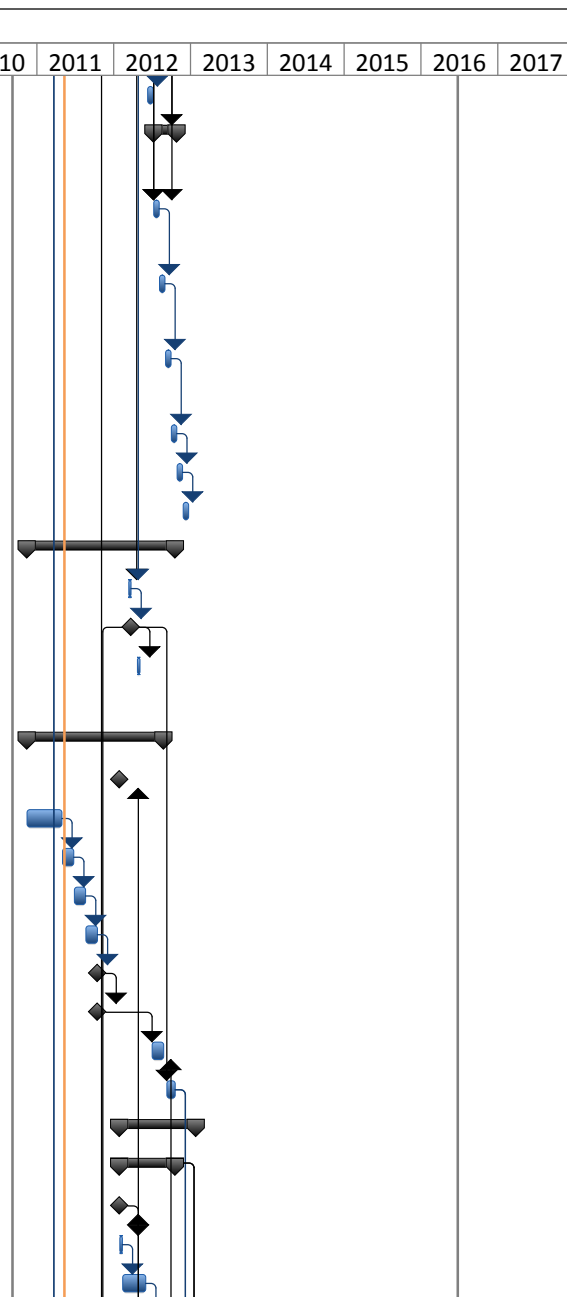
ID	Task Name	Predecessor	Start	Finish	Resource Initials	2009	2010	2011	2012	2013	2014	2015	2016	2017
248	In-home assessment staff		1/16/12	3/9/12										
249	<u>Develop training curricula and training approach</u>	246,167,	1/16/12	2/10/12	HCBS,Mi									
250	<u>Core ADRC Workgroup input</u>	249	2/13/12	2/24/12	HCBS,Mi,C									
251	<u>Revise training curricula and training approach</u>	250	2/27/12	3/9/12	HCBS,Mi									
252	AAA Management		2/27/12	4/20/12										
253	<u>Develop training curricula and training approach</u>	250	2/27/12	3/23/12	HCBS,Mi									
254	<u>Core ADRC Workgroup input</u>	253	3/26/12	4/6/12	HCBS,Mi,C									
255	<u>Revise training curricula and training approach</u>	254	4/9/12	4/20/12	HCBS,Mi									
256	Develop training for HCIL and other disability groups		4/9/12	5/18/12										
257	<u>Develop training curricula and training approach</u>	254	4/9/12	4/20/12	HCBS,Mi									
258	<u>Core ADRC Workgroup input</u>	257	4/23/12	5/4/12	HCBS,Mi,C									
259	<u>Revise training curricula and training approach</u>	258	5/7/12	5/18/12	HCBS,Mi									
260	Develop training for SHIP volunteers	256	5/21/12	6/29/12										
261	<u>Develop training curricula and training approach</u>	258	5/21/12	6/1/12	HCBS,Mi									
262	<u>Core ADRC Workgroup input</u>	261	6/4/12	6/15/12	HCBS,Mi,C									
263	<u>Revise training curricula and training approach</u>	262	6/18/12	6/29/12	HCBS,Mi									
264	Decision whether to enroll in web-based training (e.g., U of MN or Boston College)	263	7/2/12	7/27/12	CAW									
265	Obtaining permission to draw down Medicaid Administrative Federal Financial Participation		5/16/11	12/21/12										

Hawaii SCD Implementation Plan

ID	Task Name	Predecessor	Start	Finish	Resource Initials	Timeline										
						2009	2010	2011	2012	2013	2014	2015	2016	2017		
266	Obtain Med-QUEST Approval of Outlines of the Proposed Approach		5/16/11	9/30/11												
267	<u>Present Draft Approach to Med-QUEST</u>	<u>1,3</u>	<u>5/16/11</u>	<u>7/8/11</u>	<u>HCBS,EOA,</u>											
268	<u>Revise Based Upon Med-QUEST input</u>	<u>267</u>	<u>7/11/11</u>	<u>9/30/11</u>	<u>HCBS,EOA</u>											
269	Develop approach for documenting time spent on Medicaid related activities	266	10/3/11	2/17/12												
270	<u>Develop draft approach</u>	<u>266</u>	<u>10/3/11</u>	<u>10/28/11</u>	<u>HCBS</u>											
271	<u>Review by Finance and Sustainability Workgroup</u>	<u>270</u>	<u>10/31/11</u>	<u>11/25/11</u>	<u>HCBS,FSW</u>											
272	<u>Revised approach ready for MIS implementation</u>	<u>271</u>	<u>11/28/11</u>	<u>12/23/11</u>	<u>HCBS</u>											
273	Develop MIS to support 100% documentation of time	272	12/26/11	2/17/12	HCBS,Hmy											
274	Develop accounting methodology to attach costs to Medicaid related time	266	10/3/11	2/17/12												
275	<u>Obtain Med-QUEST input regarding accounting requirements</u>	<u>266</u>	<u>10/3/11</u>	<u>10/28/11</u>	<u>HCBS,EOA,</u>											
276	<u>County review and recommendations regarding how to comply with</u>	<u>275</u>	<u>10/31/11</u>	<u>11/25/11</u>	<u>HCBS,Hi,Hu</u>											
277	<u>Creation of standardized reporting approach</u>	<u>276</u>	<u>11/28/11</u>	<u>12/23/11</u>	<u>HCBS</u>											
278	<u>Review by Finance and Sustainability Workgroup</u>	<u>277</u>	<u>12/26/11</u>	<u>1/20/12</u>	<u>HCBS,FSW</u>											
279	<u>Revise approach ready for implementation</u>	<u>278</u>	<u>1/23/12</u>	<u>2/17/12</u>	<u>HCBS</u>											
280	Develop accounting structures to ensure that FFP flows back to the AAAs	273	2/20/12	7/6/12												
281	<u>Obtain input from state CFO office to determine best approach</u>	<u>266</u>	<u>2/20/12</u>	<u>3/16/12</u>	<u>HCBS,EOA</u>											
282	<u>Draft transfer of funds plan</u>	<u>281</u>	<u>3/19/12</u>	<u>4/13/12</u>	<u>HCBS,EOA</u>											
283	<u>Review by Finance and Sustainability Workgroup</u>	<u>282</u>	<u>4/16/12</u>	<u>5/11/12</u>	<u>HCBS,FSW</u>											
284	<u>Determine what needs to occur at county to receive funds</u>	<u>283</u>	<u>5/14/12</u>	<u>6/8/12</u>	<u>HCBS,Hi,Hu</u>											

Hawaii SCD Implementation Plan

ID	Task Name	Predecessor	Start	Finish	Resource Initials	Timeline										
						2009	2010	2011	2012	2013	2014	2015	2016	2017		
285	<u>Approach ready for implementation</u>	<u>284</u>	<u>6/11/12</u>	<u>7/6/12</u>	<u>HCBS,EOA,</u>											
286	Incorporate proposed approach in MOU with Med-QUEST	280	7/9/12	10/26/12												
287	<u>Draft MOU</u>	<u>269,274,</u>	<u>7/9/12</u>	<u>8/3/12</u>	<u>HCBS</u>											
288	<u>Review by Finance and Sustainability Workgroup</u>	<u>287</u>	<u>8/6/12</u>	<u>8/31/12</u>	<u>HCBS,FSW</u>											
289	<u>Review by Med-QUEST</u>	<u>288</u>	<u>9/3/12</u>	<u>9/28/12</u>	<u>HCBS,EOA,</u>											
290	MOU Signed	289	10/1/12	10/26/12	EOA,Hi,Hu,											
291	Med-QUEST submits plan to CMS for approval	290	10/29/12	11/23/12	Mq											
292	Proposed approach ready for implementation	291	11/26/12	12/21/12	Hi,Hu,Ki,Mi											
293	Maui County ADRC Rollout		11/15/10	10/19/12												
294	<u>Train staff</u>	<u>251,230</u>	<u>3/12/12</u>	<u>3/23/12</u>	<u>HCBS,Mi</u>											
295	Implementation	294	3/23/12	3/23/12	Mi											
296	<u>Train management staff on CQI and implement procedures</u>	<u>295FS+1 mon</u>	<u>4/23/12</u>	<u>5/4/12</u>	<u>HCBS,Mi</u>											
297	Add supplemental staff		11/15/10	8/24/12												
298	Letter of Intent from the State	595	1/27/12	1/27/12	EOA											
299	Creating series for type of position		11/15/10	4/29/11	Mi											
300	Creating job descriptions	299	5/2/11	6/24/11	Mi											
301	Assign SR rating	300	6/27/11	8/19/11	Mi											
302	Union approval if necessary	301	8/22/11	10/14/11	Mi											
303	Public Hearing	302	10/14/11	10/14/11	Mi											
304	County Council approval	303	10/14/11	10/14/11	Mi											
305	Hire new staff	304,597	7/2/12	8/24/12	Mi											
306	Evaluation and refinement	295FS+6	9/10/12	10/19/12	Mi											
307	Kauai County ADRC Rollout		1/27/12	1/25/13												
308	Add supplemental staff		1/27/12	10/19/12												
309	Letter of Intent received from the State	595	1/27/12	1/27/12	EOA											
310	Creating job descriptions and SR rating	309	1/30/12	2/10/12	Ki											
311	Mayor, Finance, and Personnel Approval	310	2/13/12	6/1/12	Ki											



Hawaii SCD Implementation Plan

ID	Task Name	Predecessor	Start	Finish	Resource Initials	Timeline										
						2009	2010	2011	2012	2013	2014	2015	2016	2017		
312	County Council approval	311	6/4/12	7/27/12	Ki											
313	Hire new staff	312,598	7/30/12	10/19/12	Ki											
314	Establish local level MOUs for high volume referral sources to the AAA		8/27/12	10/19/12												
315	Outreach to respective county agencies with high volume referrals	333SS-4 mons	8/27/12	9/7/12	Ki											
316	Draft MOUs	315	9/10/12	9/14/12	Ki											
317	Agreement/Sign MOUs with respective agencies	316	9/17/12	10/5/12	Ki											
318	Provide outreach and training on referring to ADRC	317	10/8/12	10/19/12	Ki											
319	Integration with Low Volume Referral Sources		10/22/12	12/14/12												
320	Kauai/EOA outreach to low volume referral agencies	318	10/22/12	11/16/12	Ki											
321	Provide outreach and training on referring to ADRC	320	11/19/12	12/14/12	Ki											
322	Kauai specific CQI changes		5/7/12	12/28/12												
323	Timeliness of assessment		12/3/12	12/28/12												
324	Ensure staff are documenting initial intake and assessments within Harmony	331	12/3/12	12/28/12	EOA,Hmy,K											
325	Timeliness of service delivery		5/7/12	11/16/12												
326	Enroll all service providers in Provider Direct	333SS-8 mons	5/7/12	10/19/12	EOA,Hmy,K											
327	Ensure that providers are documenting service delivery within Provider Direct	326	10/22/12	11/16/12	EOA,Hmy,K											
328	Develop internal review process		9/24/12	10/26/12												
329	Develop process based on Maui model	333SS-3	9/24/12	10/12/12	Ki											
330	Incorporate into AAA policies and procedures	329	10/15/12	10/26/12	Hmy,EOA,K											
331	Integrate Kauai data with Maui and add Kauai specific fields	306,308F days	10/22/12	11/30/12	Ki											
332	Train staff	331,308	12/3/12	12/14/12	EOA,Ki											
333	Implementation	332,306	12/14/12	12/14/12	Ki											
334	Train management staff on CQI and implement procedures	333FS+1 mon	1/14/13	1/25/13	EOA,Hi											

Hawaii SCD Implementation Plan

ID	Task Name	Predecessor	Start	Finish	Resource Initials	Timeline											
						2009	2010	2011	2012	2013	2014	2015	2016	2017			
335	Hawai'i County ADRC Rollout		1/24/14	4/17/15													
336	Add supplemental staff		1/24/14	2/20/15													
337	Letter of Intent from the State	601	1/24/14	1/24/14	EOA												
338	Creating series for type of position	337	1/27/14	5/16/14	Hi												
339	Creating job descriptions	338	5/19/14	7/11/14	Hi												
340	Assign SR rating	339	7/14/14	9/5/14	Hi												
341	Union approval if necessary	340	9/8/14	10/31/14	Hi												
342	County Council approval	341	11/3/14	12/26/14	Hi												
343	Hire new staff	342,603	12/29/14	2/20/15	Hi												
344	Establish local level MOUs for high volume referral sources to the AAA		11/17/14	1/9/15													
345	Outreach to respective county agencies with	362SS-4	11/17/14	11/28/14	Hi												
346	Draft MOUs	345	12/1/14	12/5/14	Hi												
347	Agreement/Sign MOUs with respective agenc	346	12/8/14	12/26/14	Hi												
348	Provide outreach and training on referring to	347	12/29/14	1/9/15	Hi												
349	Integration with Low Volume Referral Sources		1/12/15	3/6/15													
350	Hawai'i County/EOA outreach to low volume referral agencies	348	1/12/15	2/6/15	Hi												
351	Provide outreach and training on referring to	350	2/9/15	3/6/15	Hi												
352	Hawai'i County specific CQI changes		12/15/14	2/6/15													
353	Timeliness of assessment		1/12/15	2/6/15													
354	Ensure staff are documenting initial intake	360	1/12/15	2/6/15	EOA,Hmy,H												
355	Timeliness of service delivery		1/12/15	2/6/15													
356	Ensure that providers are documenting service delivery within Harmony	362SS-2 mons	1/12/15	2/6/15	EOA,Hmy,H												
357	Develop internal review process		12/15/14	1/16/15													
358	Develop process based on Maui model	362SS-3	12/15/14	1/2/15	Hi												
359	Incorporate into AAA policies and procedu	358	1/5/15	1/16/15	Hmy,EOA,H												
360	Integrate Hawai'i data with Maui/Kauai and add Hawai'i specific fields	361SS-3 mons	12/1/14	1/9/15	Hi												
361	Train staff	336	2/23/15	3/6/15	EOA,Hi												
362	Implementation	361	3/6/15	3/6/15	Hi												

Hawaii SCD Implementation Plan

ID	Task Name	Predecessor	Start	Finish	Resource Initials	Timeline											
						2009	2010	2011	2012	2013	2014	2015	2016	2017			
363	Train management staff on CQI and implement procedures	362FS+1 mon	4/6/15	4/17/15	EOA,Hi												
364	Honolulu County ADRC Rollout		1/24/14	9/4/15													
365	Add supplemental staff		1/24/14	7/10/15													
366	Letter of Intent received from the State	601	1/24/14	1/24/14	EOA												
367	Creating series for type of position	366	1/27/14	7/11/14	Hu												
368	Creating job descriptions	367	7/14/14	9/5/14	Hu												
369	Assign SR rating	368	9/8/14	10/31/14	Hu												
370	Union approval if necessary	369	11/3/14	12/26/14	Hu												
371	Public Hearing	370	12/29/14	2/20/15	Hu												
372	County Council approval	371	2/23/15	4/17/15	Hu												
373	Hire new staff	372,604F	4/20/15	7/10/15													
374	Establish local level MOUs for high volume referral sources to the AAA		4/6/15	5/29/15													
375	Outreach to respective county agencies with high volume referrals	393SS-4 mons	4/6/15	4/17/15	Hu												
376	Draft MOUs	375	4/20/15	4/24/15	Hu												
377	Agreement/Sign MOUs with respective agency	376	4/27/15	5/15/15	Hu												
378	Provide outreach and training on referring to ADRC	377	5/18/15	5/29/15	Hu												
379	Integration with Low Volume Referral Sources in Honolulu		6/1/15	7/24/15													
380	Honolulu/EOA outreach to low volume referral agencies	378	6/1/15	6/26/15	Hu												
381	Provide outreach and training on referring to ADRC	380	6/29/15	7/24/15	Hu												
382	Honolulu specific CQI changes		12/15/14	7/10/15													
383	Timeliness of assessment		6/15/15	7/10/15													
384	Ensure staff are documenting initial intake and assessments within Harmony	391	6/15/15	7/10/15	EOA,Hmy,H												
385	Timeliness of service delivery		12/15/14	6/26/15													
388	Develop internal review process		5/4/15	6/5/15													

Hawaii SCD Implementation Plan

ID	Task Name	Predecessor	Start	Finish	Resource Initials	Timeline															
						2009	2010	2011	2012	2013	2014	2015	2016	2017							
391	Integrate Honolulu data with other 3 counties and add Honolulu specific fields	393SS-3 mons	5/4/15	6/12/15	Hu																
392	Train staff	365	7/13/15	7/24/15	EOA,Hu																
393	Implementation	392	7/24/15	7/24/15	Hu																
394	Train management staff on CQI and implement procedures	393FS+1 mon	8/24/15	9/4/15	EOA,Hu																
395	Brining Case Management In-house		11/15/10	9/6/13																	
396	Draft job descriptions and identification of series	592	5/2/11	5/13/11	EOA,Mi,C																
397	Develop training infrastructure		5/16/11	8/19/11																	
398	Decision whether to enroll in web-based training (e.g., U of MN or Boston College)	396	5/16/11	5/27/11	CAW,EOA																
399	Develop training curricula and training approach (possibly adapting web-enabled	398	5/30/11	6/24/11	C,Mi																
400	Core ADRC Workgroup input	399	6/27/11	7/8/11	C,Mi,CAW																
401	Revise training curricula and training approach	400	7/11/11	7/22/11	C,Mi																
402	Implement case management tools (case notes, case management supervision, performance/quality) in Harmony	401	7/25/11	8/19/11	HCBS,Mi,Hi																
403	Maui County Rollout		11/15/10	12/23/11																	
404	Establishing Authority to Hire New Case Management Staff		11/15/10	10/14/11																	
405	Letter notifying end of waiver requirement received by county	592	5/2/11	5/2/11	Mi																
406	Creating series for type of position		11/15/10	4/29/11	Mi																
407	Creating job descriptions	406	5/2/11	6/24/11	Mi																
408	Assign SR rating	407	6/27/11	8/19/11	Mi																
409	Union approval if necessary	408	8/22/11	10/14/11	Mi																
410	Public Hearing	409	10/14/11	10/14/11	Mi																
411	County Council approval	410	10/14/11	10/14/11	Mi																
412	Hire staff	404	10/17/11	12/9/11	Mi																
413	Train staff	412,397	12/12/11	12/23/11	Mi																
414	Implementation	413	12/23/11	12/23/11	Mi																
415	Hawai'i County Rollout		1/27/12	3/8/13																	

Hawaii SCD Implementation Plan

ID	Task Name	Predecessor	Start	Finish	Resource Initials	Timeline											
						2009	2010	2011	2012	2013	2014	2015	2016	2017			
416	Establishing Authority to Hire New Case Management Staff		1/27/12	12/28/12													
417	Letter of Intent received from the State	595	1/27/12	1/27/12	Hi												
418	Creating series for type of position	417	1/30/12	5/18/12	Hi												
419	Creating job descriptions	418	5/21/12	7/13/12	Hi												
420	Assign SR rating	419	7/16/12	9/7/12	Hi												
421	Union approval if necessary	420	9/10/12	11/2/12	Hi												
422	County Council approval	421	11/5/12	12/28/12	Hi												
423	Hire staff	416,598	12/31/12	2/22/13	Hi												
424	Train staff	423	2/25/13	3/8/13	Hi												
425	Implementation	424	3/8/13	3/8/13	Hi												
426	Honolulu County Rollout		4/23/12	9/6/13													
427	Establishing Authority to Hire New Case Management Staff		4/23/12	7/12/13													
428	Creating series for type of position	435FS-18	4/23/12	10/5/12	Hu												
429	Creating job descriptions	428	10/8/12	11/30/12	Hu												
430	Assign SR rating	429	12/3/12	1/25/13	Hu												
431	Union approval if necessary	430	1/28/13	3/22/13	Hu												
432	Public Hearing	431	3/25/13	5/17/13	Hu												
433	County Council approval	432	5/20/13	7/12/13	Hu												
434	Hire staff	603	7/1/13	8/23/13	Hu												
435	Train staff	434	8/26/13	9/6/13	Hu												
436	Implementation	435	9/6/13	9/6/13	Hu												
437	Developing a Participant Direction Option		10/1/10	9/14/12													
438	System Operations		10/1/10	2/3/12													
439	FMS Contractor		10/1/10	5/2/11													
440	RFP Issued		10/1/10	10/1/10	EOA												
441	Contractor selected	440	10/4/10	11/26/10	EOA												
442	Contractor ready to offer services	441	11/29/10	5/2/11	FMS												
443	Support Broker Contract		10/15/10	5/2/11													
444	RFP Issued		10/15/10	10/15/10	EOA												
445	Contractor selected	444	10/15/10	12/9/10	EOA												

Hawaii SCD Implementation Plan

ID	Task Name	Predecessor	Start	Finish	Resource Initials	2009	2010	2011	2012	2013	2014	2015	2016	2017
446	Contractor ready to offer services	445	12/10/10	5/2/11	SB									
447	Policies & Procedures		3/21/11	5/30/11										
448	Translate workgroup decisions into draft policies and procedures document	1	3/21/11	4/11/11	EOA									
449	Participant Direction Workgroup Review	448	4/12/11	4/22/11	PDW									
450	Finalize Policies and Procedures	449	4/25/11	5/2/11	EOA									
451	Implement participant direction tracking in Harmony	450	5/3/11	5/30/11	Hmy									
452	Enrollment Process		11/1/10	4/29/11										
453	Each AAA proposes process for enrolling individuals		11/1/10	11/26/10	Hi,Ki,Mi									
454	Development of form that incorporates spend down and targeting criteria	453SS	3/1/11	3/25/11	EOA									
455	Adapt MN Capacity for Self Direction tool for Hawaii	453SS	3/1/11	3/25/11	EOA									
456	Participant Direction Workgroup Review	453,454	3/28/11	4/8/11	PDW									
457	Finalization of county specific enrollment processes	456	4/11/11	4/29/11	Hi,Ki,Mi									
458	Participant Tools		5/2/11	9/16/11										
459	<u><i>Develop Draft Participant Information and Tools adapting work from other states (primarily forms and checklists)</i></u>		<u><i>5/2/11</i></u>	<u><i>5/20/11</i></u>	<u><i>EOA,HCBS</i></u>									
460	<u><i>Incorporate tools and policies and procedures into participant manual</i></u>	<u><i>497,459</i></u>	<u><i>8/8/11</i></u>	<u><i>8/19/11</i></u>	<u><i>EOA,HCBS</i></u>									
461	<u><i>Participant Direction Workgroup Review</i></u>	<u><i>460</i></u>	<u><i>8/22/11</i></u>	<u><i>9/2/11</i></u>	<u><i>PDW,HCBS</i></u>									
462	<u><i>Revise Tools</i></u>	<u><i>461</i></u>	<u><i>9/5/11</i></u>	<u><i>9/16/11</i></u>	<u><i>EOA,HCBS</i></u>									
463	Develop Continuous Quality Improvement Infrastructure for Participant Direction		5/2/11	11/18/11										
464	Finalize Performance Indicators		5/2/11	7/22/11										
465	Participant Direction Workgroup review of draft indicators		5/2/11	5/27/11	PDW,EOA									

Hawaii SCD Implementation Plan

ID	Task Name	Predecessor	Start	Finish	Resource Initials	2009	2010	2011	2012	2013	2014	2015	2016	2017
466	Participant Direction Workgroup decision regarding threshold for when corrective action should occur	465	5/30/11	6/24/11	PDW,EOA									
467	Finalization of performance indicators	466	6/27/11	7/22/11	PDW,EOA									
468	Develop data collection methods		7/25/11	8/5/11										
469	Data from AAAs		7/25/11	8/5/11										
470	Establish data collection methods for the following areas:		7/25/11	8/5/11										
471	Number enrolled	467	7/25/11	8/5/11	Hi,Ki,Mi,EO									
472	Enrollees meet eligibility criteria	467	7/25/11	8/5/11	Hi,Ki,Mi,EO									
473	Data from FMS provider		7/25/11	8/5/11										
474	Establish data collection methods for the following areas:		7/25/11	8/5/11										
475	Budget management	467	7/25/11	8/5/11	EOA,FMS									
476	Data from Support Broker(s)		7/25/11	8/5/11										
477	Establish data collection methods for the following areas:		7/25/11	8/5/11										
478	Individual budget	467	7/25/11	8/5/11	EOA,SB									
479	Support Planning	467	7/25/11	8/5/11	EOA,SB									
480	Participant outcomes	467	7/25/11	8/5/11	SB,EOA									
481	Support brokerage	467	7/25/11	8/5/11	SB,EOA									
482	Health and safety	467	7/25/11	8/5/11	EOA,SB									
483	Management Reports		8/8/11	11/18/11										
484	Incorporate data from AAAs, Support Brokers, and FMS Provider into management reports	468	8/8/11	9/30/11	FMS,SB,EO									
485	Participant Direction Workgroup review	484	10/3/11	10/21/11	PDW									
486	Finalize management reports and prepare for incorporation within Harmony	485	10/24/11	11/18/11	SB,FMS,EO									
487	Establish review and remediation processes		7/25/11	10/7/11										
488	Develop internal AAA review process		7/25/11	9/9/11										
492	Develop EOA-AAA review process		8/29/11	10/7/11										

Hawaii SCD Implementation Plan

ID	Task Name	Predecessor	Start	Finish	Resource Initials	Timeline											
						2009	2010	2011	2012	2013	2014	2015	2016	2017			
496	Training		7/25/11	8/19/11													
497	<u>Incorporate policies, FMS, and Support Broker information into staff training manual and curricula</u>	450,446,	7/25/11	8/5/11	EOA,HCBS												
498	Train county staff	497	8/8/11	8/19/11	EOA												
499	Maui, Kauai, Hawai'i Pilot	498	8/22/11	2/3/12	Hi,Ki,Mi												
500	Expansion Plan		2/6/12	6/22/12													
501	Evaluation Decision Whether to Continue Option	499	2/6/12	3/2/12	EOA,PDW,Hi												
502	Funding Reallocation of KC or Increase?	501	3/5/12	3/30/12	ED,EOA,PD												
503	Contractual Changes w/ Existing KC Providers? Continuation of FMS and Support Broker	502	4/2/12	6/22/12	Hi,Ki,Mi												
504	Full Implementation in Maui, Kauai, and Hawai'i	503	6/22/12	6/22/12	Hi,Ki,Mi												
505	Develop expansion plan for Honolulu	504	6/25/12	9/14/12	Hu												
506	Providing Hospital Discharge Planning		11/1/10	9/5/11													
507	System Operations		11/1/10	9/5/11													
508	Model Development		11/1/10	1/20/11													
509	<u>Select HDP models to review with Hospital Discharge Workgroup</u>		11/1/10	11/11/10	EOA,HCBS,												
510	<u>Share Hospital Discharge Materials to share with HDPM group</u>		12/2/10	12/7/10	EOA,HCBS,												
511	<u>Identify HDP representative for each AAA</u>		11/29/10	12/6/10	Hi,Hu,Ki,M												
512	<u>Review Hospital Discharge Materials/Models (2 HDP Models)</u>		1/6/11	1/20/11	HDW,HCBS												
513	<u>Determine Hospital Discharge Model of Choice</u>	512	1/20/11	1/20/11	HDW,EOA,												
514	Policies & Procedures		2/10/11	5/24/11													
515	Referral Protocol from Hospital Discharge Planners to AAA	508	2/10/11	4/1/11	EOA,Hi												
516	Translate selected model and referral protocols into policies and procedures	515	4/4/11	4/29/11	EOA,Hi												
517	Review by Hospital Discharge Workgroup	516	5/2/11	5/12/11	HDW												

Hawaii SCD Implementation Plan

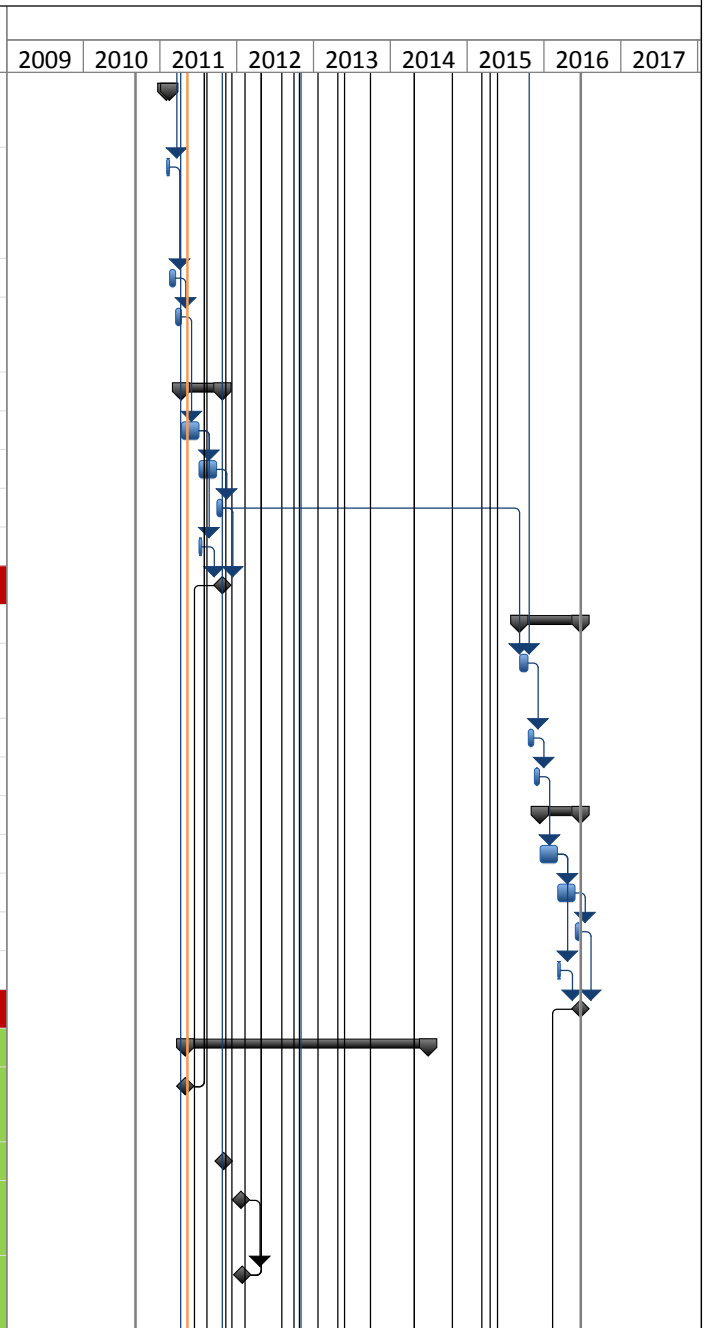
ID	Task Name	Predecessor	Start	Finish	Resource Initials	2009	2010	2011	2012	2013	2014	2015	2016	2017
518	Revised policies and procedures	517	5/13/11	5/24/11	EOA,Hi									
519	MOUs w/ Hospitals		4/29/11	6/22/11										
520	Outreach to Target Hospitals for HDP		4/29/11	5/30/11	Hi,Hu,Ki,Mi									
521	Draft MOU For Participating Hospitals		4/29/11	5/18/11	EOA,Hi									
522	Review by Hospital Discharge Workgroup	521	5/19/11	6/1/11	HDW									
523	Revise MOU	522	6/2/11	6/8/11	EOA,Hi									
524	Agreement/Sign MOU with Hospitals	520,523	6/9/11	6/22/11	Hi,Hu,Ki,Mi									
525	Training		6/1/11	8/22/11										
526	Tailor Training Materials for Hospital Discharge Model		6/1/11	8/1/11	EOA,Hi									
527	Train HDP Staff on Selected HDP Model (e.g., Coleman, Transitional Care Model, etc..)	526	8/2/11	8/22/11	EOA,Hi									
528	Continuous Quality Improvement		8/8/11	9/2/11										
529	Review and adapt Core ADRC performance indicators and data collection to reflect HDP effort	182	8/8/11	9/2/11	EOA,Hi									
530	Implementation	527,524	8/23/11	9/5/11	Hi,Hu,Ki,Mi									
531	Build Veteran's Administration Program		5/3/11	4/20/12										
532	EOA has initial meeting with VA		5/3/11	5/30/11										
533	Present Plan	439,443	5/3/11	5/16/11	EOA,VA									
534	Agree on process for developing program	533	5/17/11	5/30/11	EOA,VA									
535	Request to VAMC for information regarding dist	533	5/17/11	5/30/11	EOA,VA									
536	Preliminary guidance from VAMC regarding pre	533	5/17/11	5/30/11	EOA,VA									
537	Decision to proceed	534,535,	5/31/11	6/6/11	Ki,Mi,Hi									
538	Provider Agreement with VAMC		11/14/11	3/30/12										
539	Parties to agreement (individual AAAs vs. EOA)	537,499	11/14/11	12/2/11	EOA,FSW,V									
540	Process for referrals from VA	537,499	11/14/11	12/9/11	EOA,FSW,V									
541	Rate Determination (VAMC case-mix, VAMC set	537,499	11/14/11	12/9/11	EOA,FSW,V									
542	Rate Construction		12/12/11	1/20/12										
543	Veteran Directed Budget	541	12/12/11	1/20/12	EOA,FSW,V									
544	VD-HCBS Oversight	541	12/12/11	1/20/12	EOA,FSW,V									

Hawaii SCD Implementation Plan

ID	Task Name	Predecessor	Start	Finish	Resource Initials	2009	2010	2011	2012	2013	2014	2015	2016	2017
545	Assessment & related start-up costs	541	12/12/11	1/20/12	EOA,FSW,V									
546	Veteran's "rainy day" fund	541	12/12/11	1/20/12	EOA,FSW,V									
547	VAMC Payment for VD-HCBS		12/12/11	1/20/12										
548	AAA ability to submit monthly invoices	541	12/12/11	1/20/12	Hi,Ki,Mi									
549	Cash flow	541	12/12/11	1/20/12	Mi,Ki,Hi									
550	Complying with VA Specific Requirements		12/12/11	12/16/11										
551	Payments for non-professional workers may	541	12/12/11	12/16/11	EOA,FSW,V									
552	Veteran Representatives cannot serve as paic	541	12/12/11	12/16/11	EOA,FSW,V									
553	Follow-up process		12/12/11	1/27/12										
554	Reassessments	541	12/12/11	1/20/12	EOA,FSW,V									
555	At least quarterly face-to-face-visits	541	12/12/11	1/20/12	EOA,FSW,V									
556	Reports to share with VAMC	554,555	1/23/12	1/27/12	EOA,FSW,V									
557	AAA Decision to Proceed	542,547,	1/30/12	2/3/12	Mi,Ki,Hi									
558	County Executive Branch Approval	557	2/6/12	2/17/12	Mi,Ki,Hi									
559	County Council Approvals	558	2/20/12	3/16/12	Mi,Ki,Hi									
560	Signed Provider Agreement	559	3/19/12	3/30/12	Mi,Ki,Hi,VA									
561	Operations that need to be in place prior to implementation (developed as part of participant-direction effort)		8/22/11	4/20/12										
562	Staff trained to accept referrals from VA	560	4/2/12	4/13/12	Mi,Ki,Hi									
563	Participant Directed Pilot ready for implementation	499SS	8/22/11	8/22/11										
564	Access to agency-provided services		4/2/12	4/20/12										
565	Building in back-end ability to attribute costs to VA rather than KC	560	4/2/12	4/20/12	Mi,Ki,Hi									
566	Contract amendment (if necessary) for additional units	560	4/2/12	4/20/12	Mi,Ki,Hi									
567	Capacity to bill VA	560	4/2/12	4/20/12	Mi,Ki,Hi									
568	Implementation	560,561	4/20/12	4/20/12										
569	Restructuring Service Contracts		2/2/11	6/24/16										
570	Maui Implementation		2/2/11	10/25/11	Mi									

Hawaii SCD Implementation Plan

ID	Task Name	Predecessor	Start	Finish	Resource Initials	Timeline											
						2009	2010	2011	2012	2013	2014	2015	2016	2017			
571	Develop process to utilize 103F purchasing authority for contracting services		2/2/11	2/15/11	Mi												
572	Explore how QExA health plans contract with Home Health/Home Care providers to do unit basis billing and payment	1	2/2/11	2/15/11	Mi												
573	Train staff to understand procurement process	572	2/16/11	3/15/11	Mi												
574	Outreach service providers on contracting changes	573	3/16/11	4/12/11	Mi												
575	RFP		4/13/11	10/25/11													
576	Develop RFP	574	4/13/11	7/5/11	Mi												
577	Release RFP and Review proposals	576	7/6/11	9/27/11	Mi												
578	Signed contracts	577	9/28/11	10/25/11	Mi												
579	Train assessment and support plan staff	576	7/6/11	7/19/11													
580	Implementation	578,579	10/25/11	10/25/11													
581	Kauai and Honolulu implementation		9/7/15	6/24/16	Ki,Hu												
582	Develop process to utilize 103F purchasing authority for contracting services	578,394	9/7/15	10/16/15	Ki,Hu												
583	Train staff to understand procurement process	582	10/19/15	11/13/15	Ki,Hu												
584	Outreach service providers on contracting changes	583	11/16/15	12/11/15	Ki,Hu												
585	RFP		12/14/15	6/24/16	Ki,Hu												
586	Develop RFP	584	12/14/15	3/4/16	Ki,Hu												
587	Release RFP and Review proposals	586	3/7/16	5/27/16	Ki,Hu												
588	Signed contracts	587	5/30/16	6/24/16	Ki,Hu												
589	Train assessment and support plan staff	586	3/7/16	3/18/16													
590	Implementation	588,589	6/24/16	6/24/16													
591	Budget		5/2/11	7/1/14													
592	EOA issues letter informing counties that the waiver requirement has been removed for case		5/2/11	5/2/11	EOA												
593	2013 Budget Request Proposed by EOA		11/1/11	11/1/11	EOA												
594	2103 Budget Request Included in Governor's Budget		1/23/12	1/23/12													
595	Letter of Intent from the State sent to Maui, Kauai, & Hawai'i Counties	594FS+5 days	1/27/12	1/27/12	EOA												
















Hawaii SCD Implementation Plan

ID	Task Name	Predecessor	Start	Finish	Resource Initials	Timeline											
						2009	2010	2011	2012	2013	2014	2015	2016	2017			
596	2013 Budget approved		5/2/12	5/2/12													
597	2013 Appropriations made to counties		7/2/12	7/2/12													
598	2013 Appropriations made to counties		7/2/12	7/2/12													
599	2014/2015 Budget Request Proposed by EOA		11/1/13	11/1/13	EOA												
600	2014/15 Budget Request Included in Governor's Budget		1/20/14	1/20/14													
601	Letter of Intent from the State sent to Hawai'i and Honolulu Counties	600FS+5 days	1/24/14	1/24/14	EOA												
602	2014/15 Budget approved		5/1/14	5/1/14													
603	2014 Appropriations made to counties		7/1/13	7/1/13													
604	2015 Appropriations made to counties		7/1/14	7/1/14													
605	Full-Functioning ADRC		3/23/12	7/24/15													
606	Full-Functioning ADRC - Maui Implementation	295SS	3/23/12	3/23/12													
607	Full-Functioning ADRC - Kauai Implementation	333SS	12/14/12	12/14/12													
608	Full-Functioning ADRC - Hawai'i County Implementation	362SS	3/6/15	3/6/15													
609	Full-Functioning ADRC - Honolulu Implementation	393SS	7/24/15	7/24/15													
610	In-House Case Management		12/23/11	9/6/13													
611	Maui implementation	414SS	12/23/11	12/23/11													
612	Hawai'i County implementation	425SS	3/8/13	3/8/13													
613	Honolulu Implementation	436SS	9/6/13	9/6/13													
614	Participant Direction		8/22/11	9/14/12													
615	Kauai, Hawai'i, and Maui pilot	499SS	8/22/11	8/22/11													
616	Kauai, Hawai'i and Maui full implementation	504SS	6/22/12	6/22/12													
617	Honolulu expansion plan	505	9/14/12	9/14/12													
618	Hospital Discharge Planning	530	9/5/11	9/5/11													
619	VA Option Implementation	568SS	4/20/12	4/20/12													
620	Service contracting changes		10/25/11	6/24/16													
621	Maui implementation	580SS	10/25/11	10/25/11													
622	Kauai and Honolulu implementation	590SS	6/24/16	6/24/16													
623																	
624	Task is Related to MIS																

Hawaii SCD Implementation Plan

ID	Task Name	Predecess	Start	Finish	Resource Initials	2009	2010	2011	2012	2013	2014	2015	2016	2017
						625	Task is Related to Options Counseling Development							
626	Task is Tied to Budget Process													
627	Task Marks the Implementation of a Key Initiative													
628	<i>HCBS Strategies Task</i>													
629	Site Visit													

Project: Hawaii_Operational_Plan
Date: 5/11/11

Task		External Tasks		Start-only	
Split		Inactive Task		Finish-only	
Milestone		Inactive Summary		Deadline	
Summary		Duration-only		Progress	
Project Summary		Manual Summary	